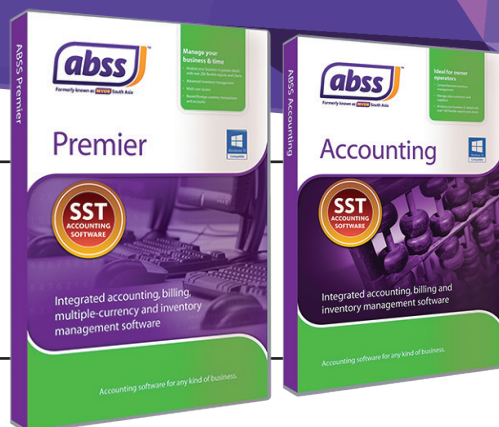


ABSS Premier v23.1

ABSS Accounting v28.1



What's New

In this release, we have extended tariff code selection into all types of Sales layout. We also included the SST compliance updates and some minor enhancements.



New SST Tax Type

1) New SST tax types

New SST tax type, as shown in below table has been added for use in line with Royal Malaysia Customs Department (RMCD) requirement to report Imported Services, Exempted Taxable Services and Sales Tax Credit Deduction.

| SST SubType | Sub Type Description | Transaction Rate | Other Rate |
|-------------|----------------------------------|------------------|-----------------------|
| IMV06 | Import Service Tax 6% | 0% | 6% (Imported Service) |
| IMN06 | Import Service Tax 6% (Non Reg.) | 0% | 6% (Imported Service) |
| OTH | Others Purchase Service Tax | 0% | - |
| PD02 | Sales Tax Credit Deduction 2% | 5% | 2% (Claimable) |
| PD04 | Sales Tax Credit Deduction 4% | 10% | 4% (Claimable) |
| TD06 | Exempted Taxable Service | 0% | 6% (Exempted) |

IMV06 and IMN06 both are meant to track the purchase of Imported Services; however, IMV06 to use by SST-registered person only, payment will reflect in field 13(c) of SST02 report. While IMN06 to use by Non-SST registered person only, and payment will reflect in SST02A report.

OTH is used by Non-SST registered person, and payment will reflect in field 10(b) of SST02A report.

PD02 and PD04 are for SST-registered person to record Purchases which entitle to claim Sales Tax Credit Deduction of 2% and 4% respectively. These two new tax codes have a new field - Claimable Rate in Tax Code Information window, which defaults at 2% and 4%. However, the user may alter this value whenever authority updates it to a different rate. With the use of these tax codes, the Sale Tax Credit Deduction amount will reflect in field 13(b) of SST02 report.

What's New

The screenshot shows the 'Tax Code Information' window for tax code PD2. The fields are as follows:

- Tax Code: PD2
- Description: Sales Tax Credit Deduction 2%
- Tax Type: Sales & Service Tax
- Rate: 5%
- SST Code: PD02
- Linked Account for Tax Collected: 2-2350 Sales & Service Tax Payable
- Linked Account for Tax Paid: 2-2350 Sales & Service Tax Payable
- Linked Card for Tax Authority: (empty)
- Claimable Rate: 2% (highlighted with a red box)

TD06 is used by a merchant to record Exempted Taxable Services in field 18(c) of SST02 report. In its Tax Code Information window, there is a new field Exempted Rate, which defaults at 6%. This is to track the exempted tax amount, which can then be displayed in the Invoice. User may alter the Exempted Rate whenever authority updates it to a different rate.

Note: It is RMCD requirement to display exempted tax amount (if any) in Invoice of the merchant.

The screenshot shows the 'Tax Code Information' window for tax code TD6. The fields are as follows:

- Tax Code: TD6
- Description: Exempted Taxable Services
- Tax Type: Sales & Service Tax
- Rate: 0%
- SST Code: TD06
- Linked Account for Tax Collected: 2-2350 Sales & Service Tax Payable
- Linked Account for Tax Paid: 2-2350 Sales & Service Tax Payable
- Linked Card for Tax Authority: (empty)
- Exempted Rate: 6% (highlighted with a red box)

What's New

New Tax Code List for newly created data file will be as follow:
 - Circled below are new tax codes introduce in this release.

| Code | Description | Type | Rate |
|------|--------------------------------|---------------------|------|
| C12 | Exempt Sales-Sch C(III) | Sales & Service Tax | 0% |
| C34 | Exempt Sales-Sch C(III&IV) | Sales & Service Tax | 0% |
| C5 | Exempt Sales-Sch C(V) | Sales & Service Tax | 0% |
| D05 | ST 5%-Own Used or Disposed | Sales & Service Tax | 5% |
| D06 | SV 6%-Own Used or Disposed | Sales & Service Tax | 6% |
| D10 | ST 10%-Own Used or Disposed | Sales & Service Tax | 10% |
| ESA | Exempt Sales-Schedule A | Sales & Service Tax | 0% |
| ESB | Exempt Sales-Schedule B | Sales & Service Tax | 0% |
| EX0 | Export/Special Area/D Area | Sales & Service Tax | 0% |
| IM6 | Import Service Tax 6% | Sales & Service Tax | 6% |
| IMN | Import Service Tax 6% (NonReg) | Sales & Service Tax | 6% |
| N-T | Non-Taxable | Sales & Service Tax | 0% |
| OTH | Others Purchase Service Tax | Sales & Service Tax | 0% |
| P12 | Exempt Purchase-Sch C(III) | Sales & Service Tax | 0% |
| P34 | Exempt Purchase-Sch C(III&IV) | Sales & Service Tax | 0% |
| P5 | Exempt Purchase-Sch C(V) | Sales & Service Tax | 0% |
| PD2 | Sales Tax Credit Deduction 2% | Sales & Service Tax | 5% |
| PD4 | Sales Tax Credit Deduction 4% | Sales & Service Tax | 10% |
| S05 | Sales Tax 5% | Sales & Service Tax | 5% |
| S06 | Service Tax 6% | Sales & Service Tax | 6% |
| S10 | Sales Tax 10% | Sales & Service Tax | 10% |
| TD6 | Exempted Taxable Services | Sales & Service Tax | 0% |



SST02 [Detail] Report

2) SST02 [Detail] Report – been updated

SST02 [Detail] report has been updated to reflected newly added tax codes for Sales and Services Tax.

| SST SubType | Sub Type Description | SST02 [Summary]/[Detail] | SST02A [Detail] |
|-------------|----------------------------------|--------------------------|--|
| IMV06 | Import Service Tax 6% | Field 11(c) | - |
| PD02 | Sales Tax Credit Deduction 2% | Field 13(b) Tax Amount | - |
| PD04 | Sales Tax Credit Deduction 4% | Field 13(b) Tax Amount | - |
| TD06 | Exempted Taxable Service | Field 18 (c) | - |
| IMN06 | Import Service Tax 6% (Non Reg.) | - | Field 10 (a)Taxable Service, Tax Payable |
| OTH | Others Purchase Service Tax | - | Field 10 (b)Taxable Service, Tax Payable |

Field 13: Amount of Tax Deducted
(a) Tax Deduction from Credit Note
 ST05 Sales Tax 5%

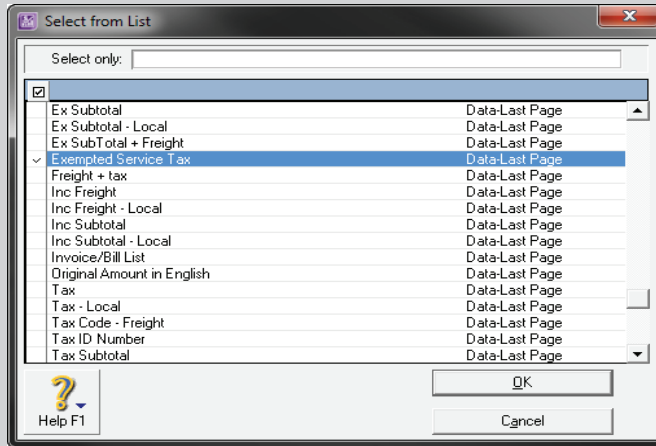
| | | | |
|---|----------|----|--------|
| 12/07/19 | 00000004 | SJ | 15.00 |
| | | | 15.00 |
| STD05 ST 5% - Own Used or Disposed | | | (NA) |
| ST10 Sales Tax 10% | | | (NA) |
| STD10 ST 10% - Own Used or Disposed | | | (NA) |
| SV06 Service Tax 6% | | | (NA) |
| SVD06 Service Tax 6% - Own Used | | | (NA) |
| IMV06 Import Service Tax 6% | | | (NA) |
| (b) Sales Tax Deduction | | | |
| PD02 Sales Tax Credit Deduction 2% | | | |
| 22/07/19 | 00000003 | PJ | 20.00 |
| | | | 20.00 |
| PD04 Sales Tax Credit Deduction 4% | | | |
| 22/07/19 | 00000003 | PJ | 80.00 |
| | | | 80.00 |
| (c) Service Tax Deduction | | | |
| Total 13 | | | 115.00 |
| Field 13A: Adjustment Under Sales Tax Deduction | | | 0.00 |
| Field 14: Total Tax Payable Before Penalty Imposed (Item 12 - Item 13) | | | 235.00 |



New Field in Invoice Template

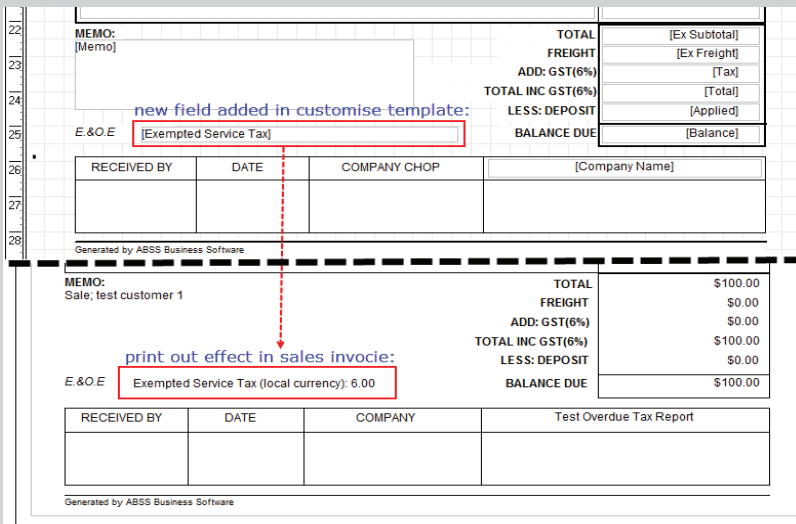
3) New Field in Invoice Template

As per RMCD requirement to display the amount of Service Tax exempted in Sales Invoice, a new field now added into Invoice Template: 'Exempted Service Tax'



User can add this new field to own customised sales invoice. Subsequently, when user recorded sales journal with exempted taxable service tax code (TD06), the exempted service tax amount will be displayed by this new field in the sales invoice.

Example:



What's New

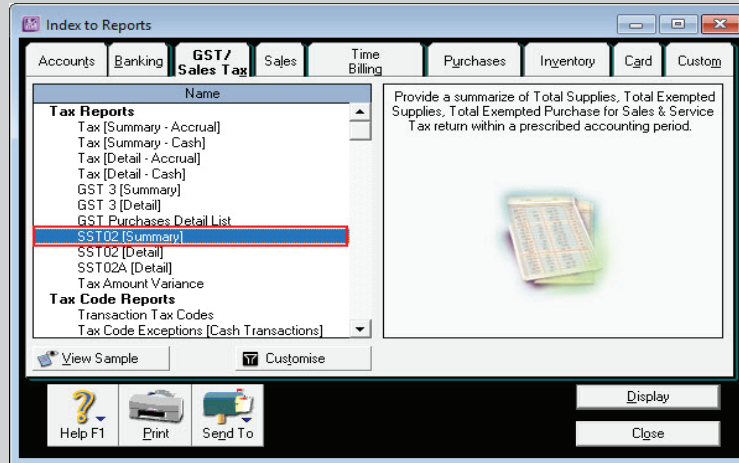


SST02 [Summary] Report

4) SST02 [Summary] Report – new report

User can now generate a summarized SST02 report with main total amounts of required report fields. This will ease input of total amounts into MySST submission portal.

To generate this report, open the Index to Reports window and select GST / Sales Tax tab> Tax Reports > SST02 [Summary].



SST-02 Summary (Sales Tax) Return
For The Period July 2019 To August 2019

22/07/19 4:21:02 PM Page 1

Part B1: Sales Details

| No. | Tariff Code | Sales | Own Use/Dispose | Service |
|-----|--------------|----------|-----------------|---------|
| 1. | 123-1234-789 | 7,000.00 | 0.00 | |
| | Total | 7,000.00 | 0.00 | |
| | Net Total | | 7,000.00 | |

Part B2: Value of Tax Payable

| | Sales | Tax |
|--|----------|--------|
| Field 11a: Total Value of Taxable Goods at 5% Rate | 7,000.00 | 350.00 |
| Field 11b: Total Value of Taxable Goods at 10% Rate | 0.00 | 0.00 |
| Field 11c: Total Value of taxable Services other than from Group H | 0.00 | 0.00 |
| Field 12: Total Sales Tax of Tax Payable (Item 11a +11b) | | 350.00 |
| Field 13: Amount of Tax Deducted | | |
| (a) Tax Deduction from Credit Note | | 15.00 |
| (b) Sales Tax Deduction | | 100.00 |
| (c) Service Tax Deduction | | 0.00 |
| Field 13A: Adjustment Under Sales Tax Deduction | | 0.00 |
| Field 14: Total Tax Payable Before Penalty Imposed (Item 12 - Item 13) | | 235.00 |
| Part D: Sales of taxable Goods Exempted From Tax | | |
| Field 18a: Export/Special Area/Designated Area | | 0.00 |
| Field 18b: Local Sales Exempted to Person | | |
| 1) Schedule A (Class of Person) | | 0.00 |
| 2) Schedule B (Manufacturer of specific non taxable goods) | | 0.00 |
| 3) Schedule C (Raw Materials/Packaging/Components) | | |
| i) Schedule C1 & C2 | | 0.00 |
| ii) Schedule C3 & C4 | | 0.00 |
| iii) Schedule C5 | | 0.00 |
| Field 18c : Total Value of Exempted Taxable Service | | 0.00 |
| Part E: Purchase of Goods Under Sch C - Person Exempted From Tax | | |
| Field 19: Exempt Purchase Sch C1 & C2 | | 0.00 |
| Field 20: Exempt Purchase Sch C3 & C4 | | 0.00 |
| Field 21: Exempt Purchase Sch C5 | | 0.00 |

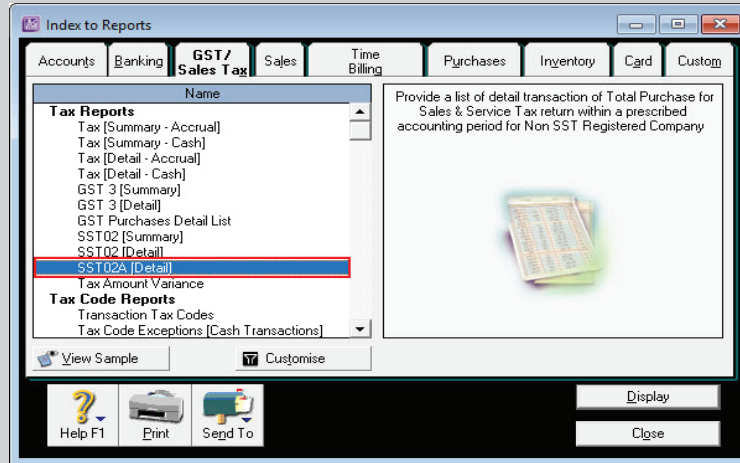


SST02A [Detail] Report

5) SST02A [Detail] Report – new report

This report is meant for Non-SST-Registered person to report their taxable imported services. It requires the use of new tax codes, IMN06, to track such payment.

To generate this report, open the Index to Reports window and select GST / Sales Tax > Tax Reports > SST02A [Detail].



SST02A Report layout

Test MY v23.1

SST02A Detail (Service Tax) Return

For The Period July 2019

22/07/19 Page 1
2:28:01 PM

| | Date | ID# | Source | Service | Tax |
|---|----------|-----|--------|-----------------|---------------|
| Field 10: Total Value of Tax Payable as Per Tax Rate | | | | | |
| a) Value Of Imported Services | | | | | |
| IMN Import Service Tax 6% (Non Reg.) | | | | | |
| | 22/07/19 | 2 | CD | 1,711.96 | 102.72 |
| | | | | 1,711.96 | 102.72 |
| b) Others | | | | | |
| OTH Others Purchase Service Tax | | | | | |
| | 22/07/19 | 2 | CD | 285.33 | 0.00 |
| | | | | 285.33 | 0.00 |
| Total 10 | | | | 1,997.29 | 102.72 |
| Field 11: Total Value of Tax Payable | | | | | 102.72 |



Service Tax 12 Months Overdue Report

6) Service Tax 12 Months Overdue Report – new report

Following the RMCD requirement that any unpaid taxable service invoice longer than 12 months, the service tax will become payable. Hence this new report been created for this purpose, it will list down all taxable service invoices that overdue for 12 months based on the selected Financial Year and Month. User can use this report to declare the overdue service tax amount in the following SST02 submission period.

To generate this report, open the Index to Reports window and select Sales > Other Sales Report > Service Tax 12 Months Overdue. The report customises window contains Financial Year and month option.

Service Tax 12 Months Overdue Report layout

| Service Tax 12 Months Overdue | | | | | | |
|-------------------------------|-----------|-------------|-------------|-------------|-------------|-------------|
| July 2019 | | | | | | |
| 22/7/2019 4:45:06 PM | | | | | | Page 1 |
| Date | Invoice # | Tariff Code | Invoice Amt | Amount Paid | Balance Due | Tax Amt Due |
| S06 (Service Tax 6%) | | | | | | |
| 19/7/2018 | 00000009 | 1 | 59.00 | 0.00 | 59.00 | 3.33 |
| 22/7/2018 | 00000010 | 1 | 380.00 | 0.00 | 380.00 | 21.51 |
| 22/7/2018 | 00000010 | 3 | 1,140.00 | 0.00 | 1,140.00 | 64.53 |
| 22/7/2018 | 00000010 | 4 | 750.00 | 0.00 | 750.00 | 43.02 |
| 22/7/2018 | 00000013 | {undefined} | 100.00 | 0.00 | 100.00 | 5.66 |
| Total: | | | | 0.00 | 2,439.00 | 138.05 |
| Grand Total: | | | | 0.00 | 2,439.00 | 138.05 |

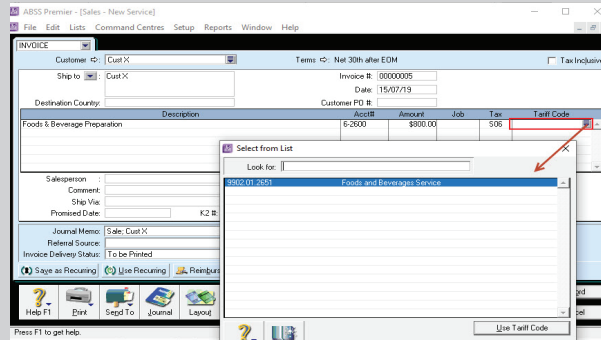
Enhancements



Tariff Code

1) Tariff Code in all Sales Invoice layouts

Tariff Code field has been added into all Sales Invoice layout such as Service layout, Professional layout, Time Billing layout and Miscellaneous layout. User will be able to select tariff code from Tariff Code table.

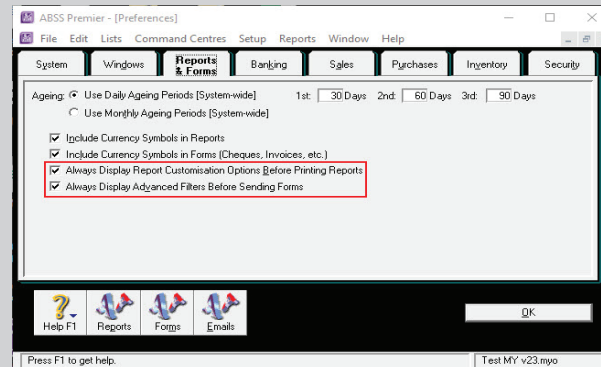


Default System Preference setting

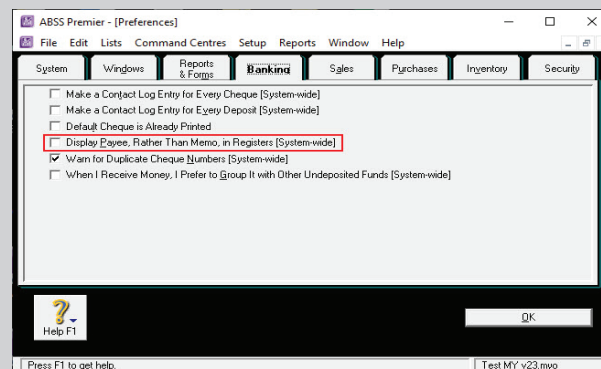
2) Default System Preference setting

The default system preference setting has been updated as below when the user creates a new data file. This will ease the user when configuring the initial setup.

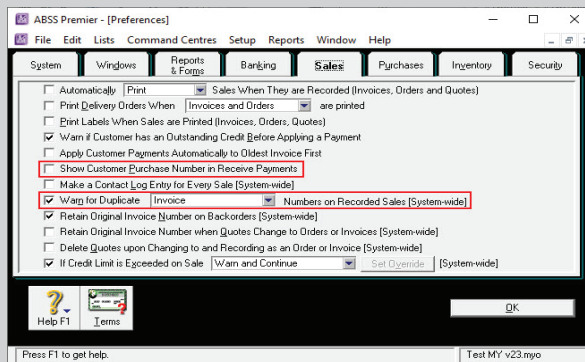
Default Report & Form Preference



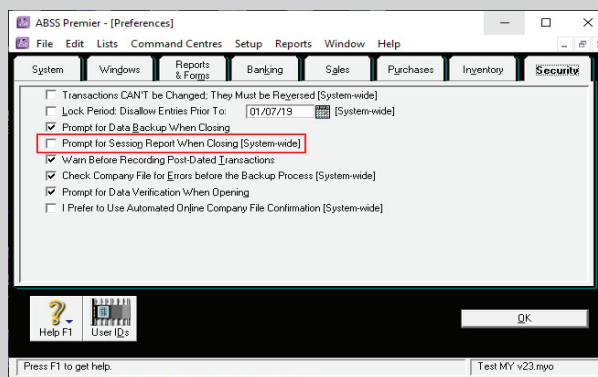
Default Banking Preference



Default Sales Preference



Default Security Preference



Updated

3) ODBC – Updated to prevent altering data file registration status

The ODBC Test Connection function has been updated to prevent possible changes in data file registration status to become Read Only.

4) Free Trial and Sample Data File

- a. Transaction Limit - All non-activated trial data and sample data file (Clearwtr.myo) now carries a limit of maximum 800 transaction lines for trial purposes. Once exceeded limit, that trial data file will automatically become READ ONLY.
- b. Free Trial Period – trial period of non-activated data file now set to 7 days only, after which data file will become READ ONLY. To continue using that data, user have to activate it.